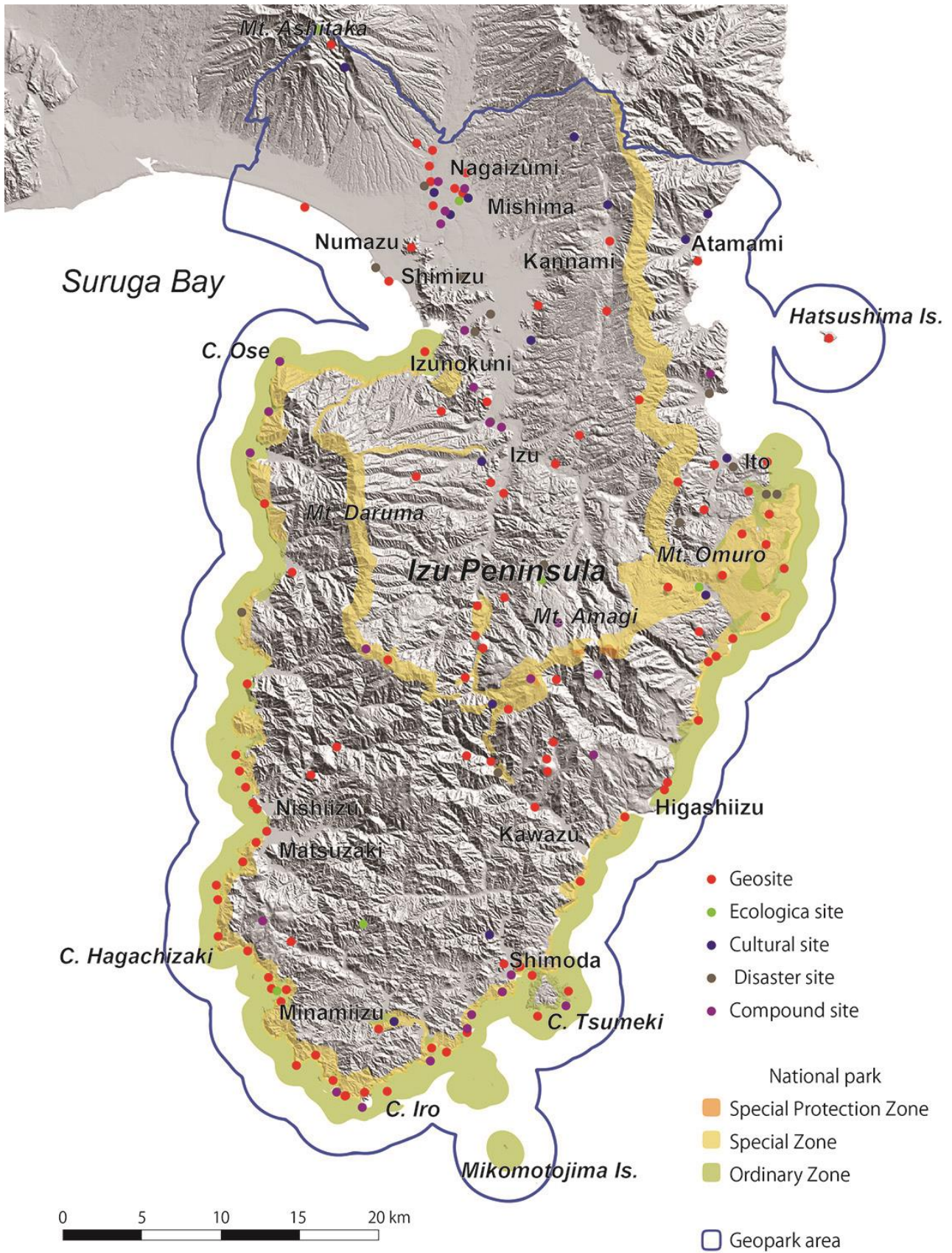


Inventory of Izu Peninsula UNESCO Global Geopark registered sites

	Site name	Site category	Description	Location municipality	Heritage designation	Number of Interpretation Panel	Scientific importance	Use for education	Use for geotourism
1	Bomb shelter of Daitokan Inn	Geosite	Scoria deposit from Hachigakubo and Babadaira Volcanos	Ito					
2	Joboshi Volcanic Crater	Geosite	Joboshi volcanic crater, civic field, and Minami elementary school	Ito					
3	Cape Shiofuki	Geosite	Cape Shiofuki area and the parking lot	Ito					
4	Komuro Volcano	Geosite	Komuroyama Scoria Cone and its lava. The territory is inside the National Park area	Ito		5			
5	Lake Ippeki	Geosite	Ippekiko Maar and its surroundings	Ito		2			
6	Futo Coast	Geosite	Futo Coastal area	Ito		1			
7	Jogasaki Coast	Geosite	Jogasaki Coast and its beach ridge	Ito	Municipal	5			
8	Iwoyama Volcano	Geosite	Iwoyama Scoria Cone	Ito					
9	Ipponmatsu Parking Lot	Geosite	Exposure of the Iwo Volcano lava	Ito		1			
10	Akasawa Fishery Port	Geosite	Exposure of the Iwo Volcano lava in the vicinity of Akazawa	Ito					
11	Cape Nakanosaki	Geosite	Toe of the lava flow	Ito					
12	Babanotaira Volcano	Geosite	Grassland area of Babanotaira	Ito					
13	Chigogafuchi Valley	Geosite	Chigogafuchi Valley	Ito		1			
14	Omuro Volcano	Geosite	Omuroyama Scoria Cone and Iwamuro Volcano	Ito	National	5			
15	Yahazu Volcano	Geosite	Yahazu Volcano and Kounoyama Volcano	Ito					
16	Umenokidaira Volcano	Geosite	Crater of Umenokidaira Volcano	Ito					
17	Mt. Joyama	Geosite	Mt. Joyama	Izunokuni		2			
18	Ukihashi Active Fault Landforms	Geosite	Civic forest park territory	Izunokuni					
19	Fudo Falls	Geosite	Fudo Falls and the temple	Izunokuni					
20	Sukumo Volcano	Geosite	Sukumo scoria cone but higher than skyline road	Izu					
21	Asahi Falls	Geosite	Asahi Falls and Odaira Shrine	Izu		1			
22	Okunoin Platy Joints	Geosite	Okunoin Temple	Izu					
23	Lepidocyclina Fossils at Shimoshiraiwa	Geosite	Registered area of the natural monument	Izu	Prefectural	1			
24	Nakaizu Winery Peneplain	Geosite	Cultivation field of the winery	Izu					
25	Seko Valley	Geosite	Seko Valley	Izu					
26	Joren Falls	Geosite	Joren Falls and lava plateau of Kayano. The territory is inside the National Park area	Izu		1			
27	Hachikubo Vocano	Geosite	Hachikubo Scoria Cone	Izu		1			
28	Namesawa Valley	Geosite	Lava of Namesawa Volcano and lahar exposure	Izu		1			
29	Nagano	Geosite	Lava plateau of Nagano and rice terrace of Arahara	Izu					
30	Toi Goldmine	Geosite	Mine pits area and mining museum	Izu		1			
31	Gantsuki Tensho Goldmine	Geosite	Mine territory	Izu					
32	Yuhi Falls	Geosite	Yuhi Falls and its vicinity	Izu					
33	Kajiyamama Turbidite	Geosite	Exposure of the turbidite	Izu		1			
34	Lake at the top of Mt. Nekko	Geosite	Lake and its surroundings	Izu /		1			
35	Takamba Coast	Geosite	Takamba coast and its vicinity	Shimoda					
36	Ebisu Island	Geosite	Ebisu Island area	Shimoda		3			
37	Mt. Nesugata	Geosite	Upper mountain of Nesugatayama	Shimoda					
38	Mt. Shimoda-fuji	Geosite	Mount Shimoda-fuji	Shimoda					
39	Bentenjima Cape at Kakizaki	Geosite	Bentenjima Cape area	Shimoda		1			
40	Ryugu Sea Cave	Geosite	Ryugu Sea Cave and its surrounding trail	Shimoda		2			
41	Lava Flow from Numanokawa-hiqashi Volcano	Geosite	Lookout area	Kawazu					
42	Lava flow from Kanten forestry road volcano	Geosite	Lava flow area	Kawazu					
43	Kawazu Seven Falls	Geosite	Surrounding area of the roop bridge to sarutahuchi	Kawazu					
44	Hachinoyama Volcano	Geosite	Scoria cone of Hachinoyama Volcano	Kawazu					
45	Scoria Road Cutting at Hachinoyama Volcano	Geosite	Road cutting path area	Kawazu					
46	Sagano River Trail	Geosite	Vicinity of Sagano river	Kawazu		1			
47	Shobuzawa Coast	Geosite	Shobuzawa coast and neiboring reefs	Kawazu					
48	Sandantaki Falls	Geosite	Vicinity of Sandandaki Falls	Kawazu					
49	Lake Komoike and Shirataki Park	Geosite	Lake Komoike, Shirataki Park, and connecting Sakura River	Mishima		2			
50	Lava of Mishima Station North Entrance	Geosite	Lava exposure nearby the Station	Mishima		1			
51	Ayudome Falls	Geosite	Area of ayudome Falls, lowe left bank exposure, and right bank lookout	Mishima					
52	Cape Bantenjima	Geosite	Area of Cape Bantenjima	Matsuzaki		1			
53	Muroiwa Quarry	Geosite	Quarry and the parking lot	Matsuzaki		4			
54	Mt. Eboshi at Kumomi	Geosite	In the vicinity of Mt. Eboshi, Cape Omoide, and Ushituki Rock	Matsuzaki		4			
55	Senganmon Rock	Geosite	Vicinity of Senganmon Rock	Matsuzaki		2			
56	Iwachi	Geosite	Bay area of Iwachi	Matsuzaki		1			
57	Senbon Coast	Geosite	Numazu City territory of Senbon Coast	Numazu					
58	Mt. Ushibuse	Geosite	Area of Mt. Ushibuse	Numazu		1			
59	Awashima Island	Geosite	Awashima Island and its vicinity	Numazu					
60	Mt. Kanuki	Geosite	Upper mountain of Kanukiyama	Numazu		1			
61	Funayama	Geosite	Funayama hamlet and sea cliff	Numazu		1			
62	Ayutshubo Falls	Geosite	Mishima Lava at the Ayutubo Falls	Numazu/ Nagaizumi	Prefectural	2			
63	Pillow Lava at Ishiki	Geosite	Pillow lava exposure	Nishiizu		2			
64	Cape Kogane	Geosite	Cape Kogane	Nishiizu	Prefectural	2			
65	Futo Coast	Geosite	Dykes, tuff, and land-tied island	Nishiizu		2			
66	Dougashima Coast	Geosite	Dougashima Coastal area	Nishiizu	National	4			

	Site name	Site category	Description	Location municipality	Heritage designation	Number of Interpretation Panel	Scientific importance	Use for education	Use for geotourism
67	Sawada Park	Geosite	Sawada Park	Nishiizu					
68	Karuno Park	Geosite	Karuno Park	Nishiizu		1			
69	Cape Ajo	Geosite	Cape Ajo	Nishiizu					
70	Cape Tomyo and Tago Area	Geosite	In the vicinity of Cape Tomyo to Sonnoshima Island	Nishiizu					
71	Deai Turbidite	Geosite	Exposures of nannoplanktons and turbidites	Nishiizu					
72	Kubo-no-yusui Spring	Geosite	Dry detention park area	Nagaizumi		1			
73	Yoroigabuchi Falls	Geosite	Falls surroundings	Nagaizumi		1			
74	Ushigabuchi Falls	Geosite	Falls surroundings	Nagaizumi		1			
75	Yatsu-no-yusui Spring	Geosite	Natural spring area	Nagaizumi					
76	Tsurubeotshi Falls	Geosite	Falls surroundings	Nagaizumi		1			
77	Cape Kurone	Geosite	Cape surroundings	Higashiizu					
78	Hasami Rocks	Geosite	Rocks surroundings	Higashiizu					
79	Lava Outcrop from Amagi Volcano	Geosite	Lava outcrops including columnar pillars	Higashiizu					
80	Shirata Sulfur Mining Site	Geosite	Sulfur mining site	Higashiizu					
81	Anagiri Coast	Geosite	In the vicinity of the coast	Higashiizu					
82	Cape Hakachi	Geosite	Cape Hakachi and Akakabe sea cliff	Minamiizu		1			
83	Jaishi	Geosite	Jaishi site	Minamiizu					
84	Ihama	Geosite	Ihama hamlet area	Minamiizu					
85	Ochii	Geosite	Sea cliff at the south of Ochii hamlet	Minamiizu					
86	Mera	Geosite	Mera Bay area	Minamiizu					
87	Shirazaki Coast	Geosite	Sea cliff at Shirasaki	Minamiizu					
88	Ryuzaki Dyke	Geosite	Jakudari Dyke and neighboring sea cliff	Minamiizu					
89	Iruma	Geosite	Normal fault, monument, and sand bank at Iruma	Minamiizu					
90	Iruma-senjokiji	Geosite	Coastal area between Senjokiji and Cape mituishi where including dyke	Minamiizu					
91	Columnar Joints at Nakagi	Geosite	Coastal area between parking lot and Togai Coast	Minamiizu		1			
92	Outcrop of Minamizaki Volcano	Geosite	Sea cliff located at the south of the Yusuge Park	Minamiizu					
93	Irozaki Fishery Port	Geosite	Irozaki Fishery Port surrounding area including the	Minamiizu					
94	Kano	Geosite	Quarry area	Minamiizu					
95	Yumigahama Coast	Geosite	Yumigahama Coast	Minamiizu		1			
96	Ounohama Coast	Geosite	Coastal area between Ounohama Coast and Cape	Minamiizu	Municipal				
97	Minokake Rocks	Geosite	Rock reefs of Minokake Rocks and surrounding sea	Minamiizu					
98	Nishikigaura Coast	Geosite	West coast of Akao Hotel	Atami					
99	Hatsushima Island	Geosite	Hatsushima Island area	Atami					
100	Tanna Fault Park	Geosite	Fault Park area	Kannami	National	1			
101	Tsunami Outcrops at Nabeta Beach	Geo/Disaster	Nabeta Beach	Shimoda					
102	Lake Haccho	Geo/Ecological	National park special protection zone	Izu		1			
103	Kawagodaira Lavas	Geo/Ecological	Lava area	Izu					
104	Cape Tsumeki	Geo/Ecological	Greater Cape Tsumeki	Shimoda	Prefectural	2			
105	Kisami-ohama Beach	Geo/Ecological	Sea caves in the vicinity of the Kisami-ohama	Shimoda					
106	Touji Sand Dune	Geo/Ecological	Sand dune and vicinity outcrops	Shimoda		1			
107	Sakai River and Kiyozumi Green Area	Geo/Ecological	Park territory	Mishima					
108	Cape Ose	Geo/Ecological	Cape Ose including Minami dyke	Numazu	National	1			
109	Ita	Geo/Ecological	Beach ridge, Lake Myojin and the sea cliff of	Numazu		1			
110	Kakita River Natural Springs	Geo/Ecological	Kakita river from riverhead to nearby Shizimizu Elementary School	Shimizu	National	1			
111	Hosono Highland	Geo/Ecological	Mountain-burning area	Higashiizu	Prefectural	2			
112	Lake Shiranuta	Geo/Ecological	Lake and the trail	Higashiizu					
113	Yusuge Park	Geo/Ecological	Yusuge park area	Minamiizu		1			
114	Suishozan mound	Geo/Ecological/Cultural	Mt. Suishozan and Ohito Bridge	Izunokuni		1			
115	Heda Town and Cape Mihama	Geo/Ecological/Cultural/Disaster	Greater Heda Bay including terrestrial area	Numazu		3			
116	Mt. Katsuragi	Geo/Ecological/Cultural/Lookout	Upper mountain of Katsuragi	Izunokuni		2			
117	Nishiamagi Highland	Geo/Lookout	Greater Nishina Pass	Nishiizu / Izu					
118	Futo Fortification Stone	Geo/Cultural	Coast area around fortification stone	Ito		1			
119	Mt. Nakou	Geo/Cultural	Cultural property area	Ito					
120	Kitaema Cave Tombs	Geo/Cultural	Greater cave area	Izunokuni		1			
121	Mine Geyser	Geo/Cultural	Area of Geyser park	Kawazu					
122	Rakujuen Park	Geo/Cultural	Rakujuen Park area	Mishima	National	1			
123	Warikozukainarizuka Shrine	Geo/Cultural	Shrine territory	Nagaizumi		1			
124	Teishi Mida Cave	Geo/Cultural	Cape area including Mida Cave	Minamiizu	National				
125	33 Deities of Mercy at Koura	Geo/Cultural	Vicinity of 33 Deities of Mercy	Minamiizu		1			
126	Cape Iro	Geo/Cultural	Cape Iro from cape toe to the Ocean Park	Minamiizu		1			
127	Karai Shrine	Geo/Cultural	Area of the shrine	Kannami	Municipal	1			
128	Kashiya Cave Tombs	Geo/Cultural	Designated area of the caves	Kannami					
129	Ike Valley Village Forest Landscape	Ecological	Ike hamlet territory	Ito		1			
130	Ikadaba Wasabi Terrace	Ecological	Ikadaba valley	Izu					
131	Pre-ice forest at Mt. Amagi	Ecological	Area of special protection zone	Izu /	National				
132	Genbei River	Ecological	Genbei River from headstream to Hirokoji street	Mishima	World Water System Heritage	1			
133	Beech Forest at Mt. Ashitaka	Ecological	Around the top of Mt. Ihai	Nagaizumi					
134	Kamper Forest in ARI-UTF	Ecological	Kamper Forest in ARI-UTF	Minamiizu					
135	Quercus phillyraeoides Community at Koura	Ecological	33 Deities of Mercy at Koura area	Minamiizu	Prefectural				

	Site name	Site category	Description	Location municipality	Heritage designation	Number of Interpretation Panel	Scientific importance	Use for education	Use for geotourism
136	Tenjinbara	Ecological/ Lookout	Tenjinbara area including Chojagahara Mountain	Minamiizu		1			
137	Townscape of Ito Hotsprings	Cultural	Registered cultural property "Tokaikan Inn" and its surroundings	Ito		1			
138	Ike Discharge Tunnel	Cultural	Entrance of the tunnel	Ito					
139	Nirayama Reverberatory Furnaces	Cultural	Territory of the furnaces and guidance center	Izunokuni	World Cultural Heritage				
140	Shuzenji Hotsprings	Cultural	Main area of Shuzenji hotspring townscape	Izu		1			
141	Old Amagi Tunnel	Cultural	Tunnel and its vicinity	Izu					
142	Shirahama Shrine	Cultural	Shrine area	Shimoda		1			
143	Rendaiji Hotesprings	Cultural	Rendaiji hotspring townscape	Shimoda					
144	Stone Buddha Statues at Mt. Kan'on	Cultural	Vicinity of stone statues	Kawazu					
145	Mishima Taisha Shrine	Cultural	Territory of the shrine	Mishima		1			
146	Yamanaka Castle Park	Cultural	Territory of the castle	Mishima					
147	Lake Maruike	Cultural	Park territory	Shimizu					
148	Harabun Ancient Burial Mound	Cultural	Ancient burial mound park area	Nagaizumi		1			
149	Ashitakasuijinsha Temple	Cultural	Suijinja Temple territory	Nagaizumi		1			
150	Hokkawa Fortification Stone Park	Cultural	Park territory	Higashiizu					
151	Shimogamo Hotsprings	Cultural	Main area of hotspring wells	Minamiizu		1			
152	Hashiriyu Hotspring	Cultural	Hotspring site	Aami		1			
153	Atami Townscape	Cultural	Center of Atami town and Tanna Tunnel entrance	Atami					
154	Karusawa	Cultural	Active fault exposure	Kannami					
155	City of Shimoda	Cultural/Disaster/ Lookout	Old town area of Shimoda	Shimoda		1			
156	Oratche Dairy Farm	Cultural/ Lookout	Farm territory	Kannami					
157	View from Darumayama	Lookout	Top and neighboring parking lot of Mt. Daruma	Izu					
158	View from Darumayama Resthouse	Lookout	Resthouse area	Izu		1			
159	Agricultural Landscape at Hakone Volcano West Flank	Lookout	Lookout area of the west slope	Mishima					
160	Ishibu Rice Terraces	Lookout	Rice terrace area	Matsuzaki					
161	Kumomi Yuhito-shioisainomisaki Auto Camp Site	Lookout	Lookout sites in the camping ground	Matsuzaki					
162	View from Mt Ashitaka Southern Flank	Lookout	Parking lot area	Numazu					
163	View from Mt. Kinkan	Lookout	Around the top of Mt. Kinkan	Numazu					
164	View from Mt. Honjo	Lookout	Around the top of Mt. Honjo	Shimizu		5			
165	View from Surugadaira Hill	Lookout	Greater hill top area	Nagaizumi		1			
166	View from Mt. Sengen	Lookout	Around the top of Mt. Sengen	Higashiizu					
167	View from Yogai Bridge	Lookout	Vicinity of the bridge	Higashiizu					
168	View from West Tanna Parking	Lookout	Parking lot area	Kannami		1			
169	View from Jikkoku Pass	Lookout	Top area of the Jikkoku Pass	Kannami		1			
170	Gyorenji Temple	Disaster	Gyorenji Temple territory	Ito					
171	Butsugenji Temple	Disaster	Temple territory	Ito					
172	Kaizoji Temple	Disaster	Temple territory	Ito					
173	Keikyojin Temple	Disaster	Temple territory	Ito					
174	Lake Matsukawa/Okuno Dam	Disaster	Lake Matsukawa/ Okuno Dam	Ito		2			
175	Earthquake Striation	Disaster	Seller of property	Izunokuni	National	1			
176	Kanogawa Flood Control Channel	Disaster	Kanogawa Flood Control Channel territory	Izunokuni		1			
177	Kanogawa Memorial Park	Disaster	Park territory	Izu					
178	Landslide at Ikadaba	Disaster	landslide area	Izu					
179	Mishima Shrine	Disaster	Shrine territory	Izu					
180	Kawazu Nanadaru Roop	Disaster	Area of roop bridge	Kawazu					
181	View-O Sluice	Disaster	Greater View-O	Numazu		2			
182	Ohira	Disaster	Ohira hamlet area including Kanogawa riverbank and lockages	Numazu					
183	Kawakubo Earthquake Depression	Disaster	Landslide area	Numazu					



Izu Peninsula UNESCO Global Geopark registered sites map